



Finlog[®]

The Natural Choice



Making bespoke log cabins since 1995
Quality craftsmanship, sustainable living, timeless excellence

Thank you for requesting a brochure!

We invite you to explore our brochure and discover the many advantages of our cabins.

What sets us apart from other log cabin companies is our commitment to personalised service and quality craftsmanship. Since 1995 we have worked closely with our clients to understand their needs, preferences, and provide them with customised design, planning assistance and construction solutions that exceed their expectations.

Our team of skilled and certified log cabin builders use the latest tools, techniques, and safety protocols to deliver log cabins that are not only beautiful, but also safe, durable, and comfortable.

Our log cabins offer a unique and rewarding lifestyle that you and your family will treasure for years to come.

Thank you for considering us as your log cabin partner, and we look forward to hearing from you soon!

Contents

- About Us
- Our Logs
- Transportable Buildings
- Design Ideas
- Planning
- Caravan Act
- What Happens Next?
- Commercial Projects
- Log Homes
- Contact Information
- Warranty
- FAQ's



FOR HELPING
THE ENVIRONMENT

WINNER 2023

**SUSTAINABLE
DEVELOPMENT**

Which?
Trusted Trader

About Us

Finlog is a family run company specialising in constructing log cabins that comply with BS3632 and the Caravan Act. We pride ourselves on our high-quality workmanship and attention to detail which has been passed down from generation to generation. We use only the finest materials and traditional techniques to create our beautiful log cabins. The cabins are designed to be both functional and comfortable with modern amenities such as under floor heating, insulation, and energy-efficient windows while still maintaining their rustic charm. With a range of sizes and styles available, customers can choose the perfect cabin to suit their needs. Finlog is committed to providing excellent customer service and ensuring that each customer is completely satisfied with their new log cabin.



Rob & Sharon Sheridan
Founders/Managing Directors of Finlog



Mick & Julie

Transportable Building 190mm
Round Logs

"Our experience of working with everyone at Finlog has been very enjoyable. The process of building the cabin was explained to us at the start, and everything went just as planned. Everyone who has visited the cabin are truly amazed by the design, quality and finish. We would certainly recommend them to anyone."



Ian & Phyllis

Transportable Building 88mm
Laminated Logs

"We had a log cabin (lodge) supplied and built by Finlog all works carried out as promised and on time we would recommend this company for any future projects Yours sincerely. Mr and Mrs I north. Sharon and Rob follows the project through from start to finish."



Our Logs

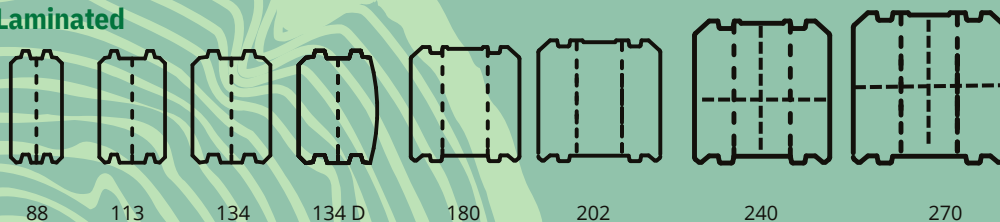
Our company offers an extensive range of log types and profiles to suit a variety of construction needs. Our selection spans from 88mm laminated logs to 300mm Massive (one piece) Round/Hand Scribed logs, allowing for flexibility in building designs.

Our laminated logs are crafted through a process of gluing two or more planed planks together in a manner that places the heartwood of the log's on the exterior. This manufacturing technique significantly reduces the occurrence of shaking, cracking and warping, enhancing the overall durability of the structure.

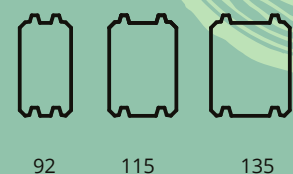
For those seeking a more rustic/traditional approach to building, our massive square logs provide a pure wood option that allows for natural breathability without any added chemicals or glue films. These logs are an excellent choice for environmentally conscious customers who enjoy the rustic cracks and individual style they provide.

We also produce massive round logs, available in dimensions ranging from 150-270mm in 20mm increments. Additionally, we offer various sizes of laminated round logs, available in dimensions between 190-295mm. All our logs are crafted from pine or spruce slow grown in sustainable forests in Northern Finland.

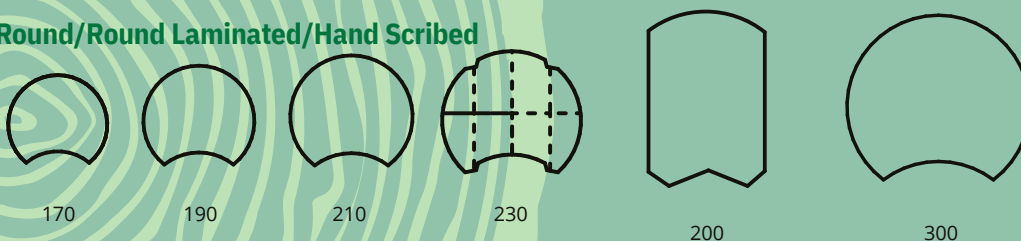
Laminated



Solid/Square

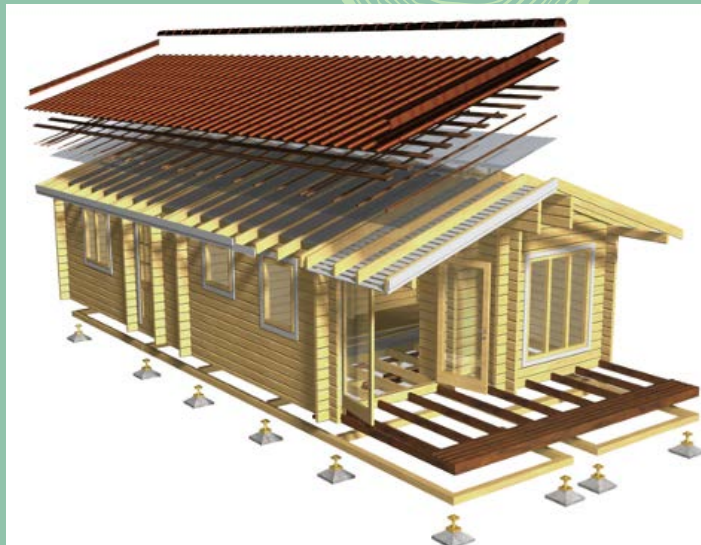


Round/Round Laminated/Hand Scribed

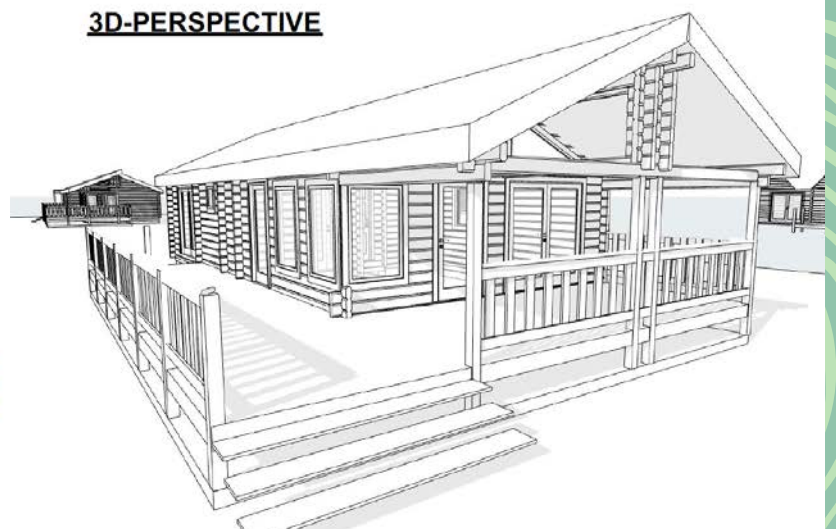


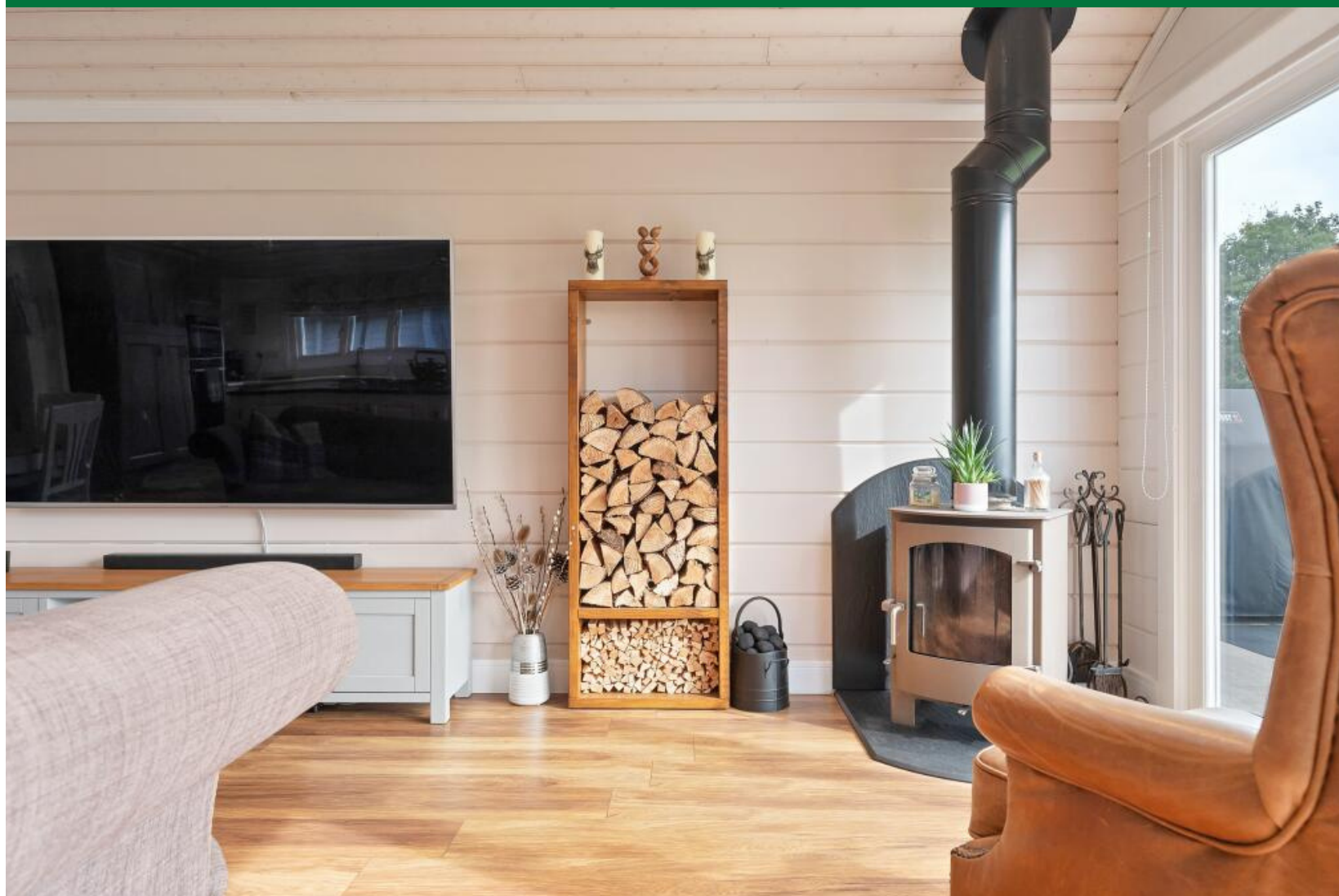
Transportable Buildings

Transportable log cabins are an increasingly popular alternative to static caravans, log homes and other temporary buildings, offering a unique and customised solution that fully complies with BS3632 and the caravan act. Our cabins are constructed using slow grown Finnish timber that we treat with premium coatings to resist decay and insect infestation. As all our buildings are made to order they can be designed to include a variety of modern amenities such as under floor heating, renewable energy systems, and off-grid waste solutions. Our use of sustainable materials, modern manufacturing techniques and traditional construction methods ensures our buildings are the perfect blend of sustainability, technology and tradition. With a range of sizes and styles available or bespoke designs, transportable log cabins offer a versatile and unique option for those seeking the rustic charm of a log cabin but modern comforts. These buildings serve as excellent annexes, agricultural accommodation, holiday rentals and are ideal for downsizing on your own land. The following designs are cabins that have been custom designed for clients, you can choose one of these or one of the hundreds of other designs we have built or create one of your own.



3D-PERSPECTIVE

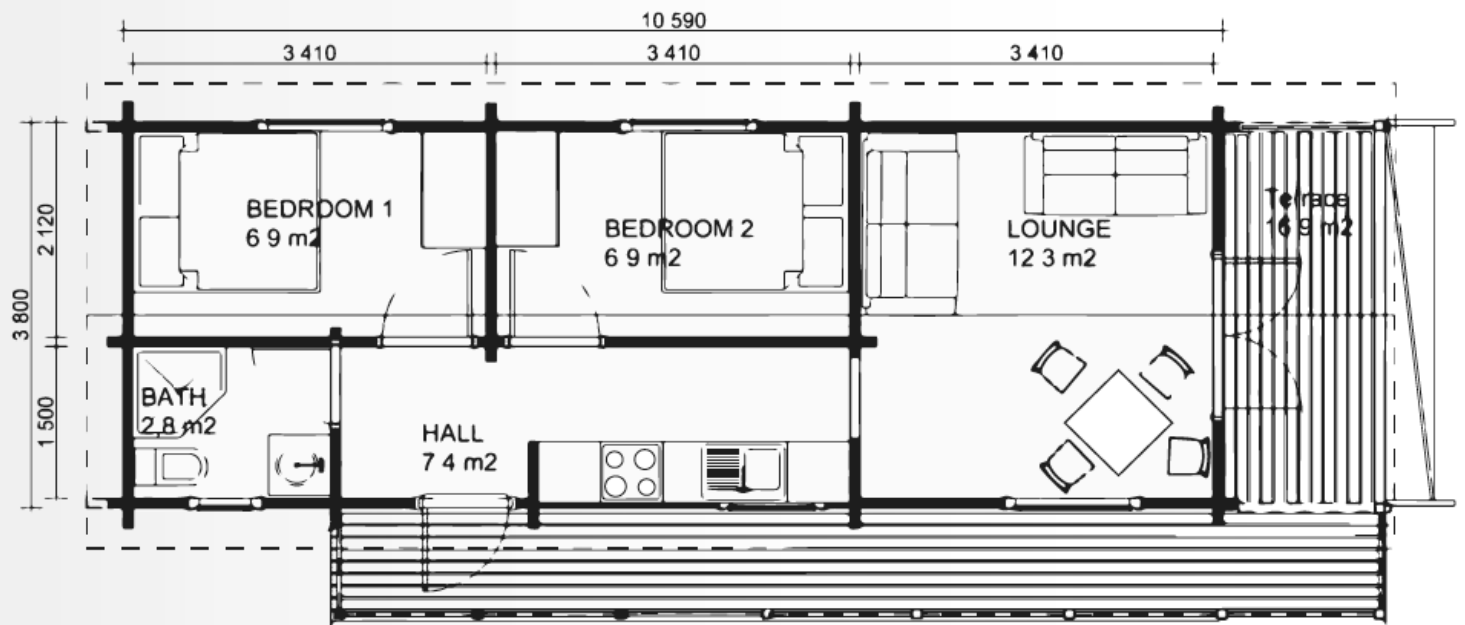






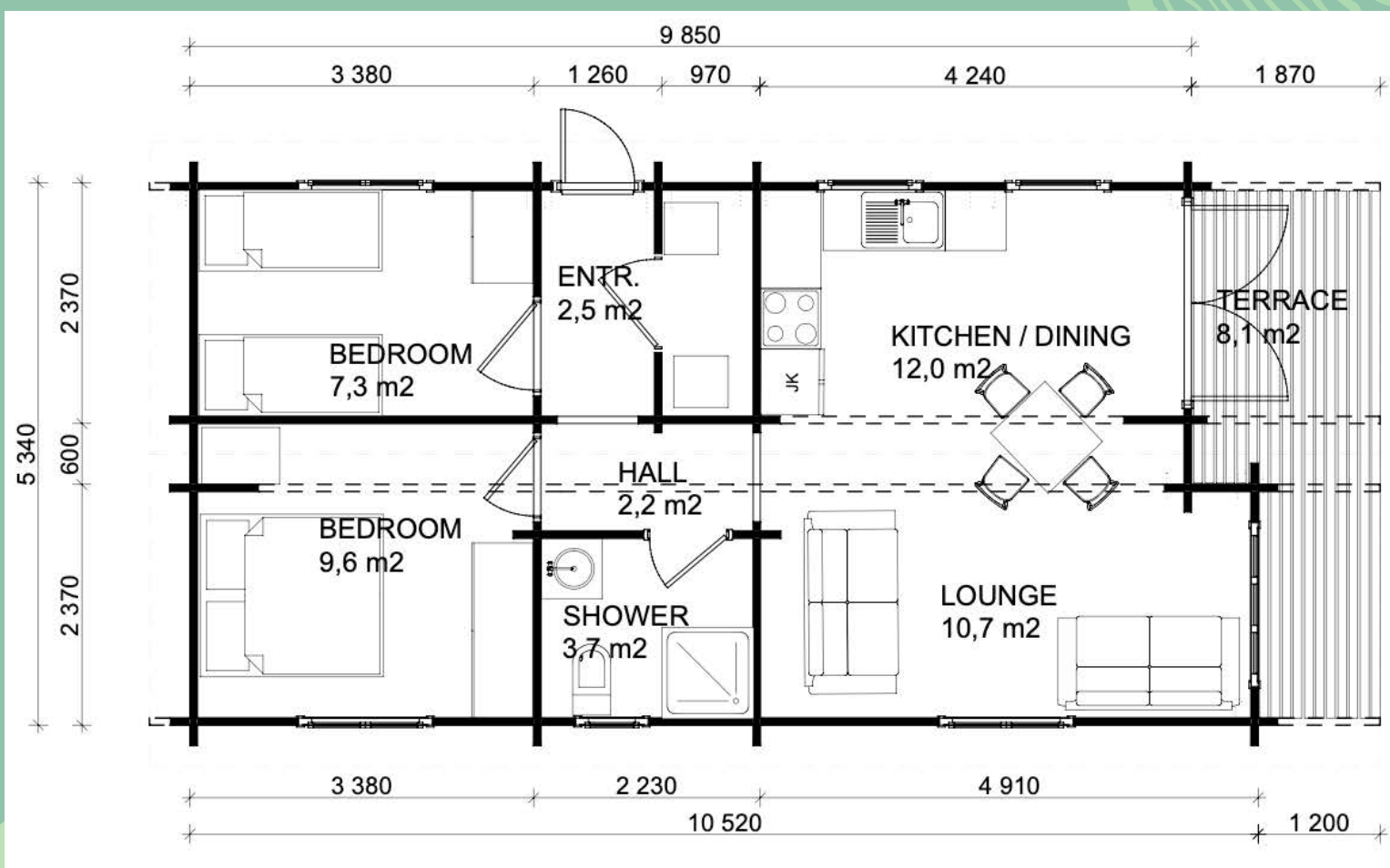
Orkney

A lovely little building featuring two double bedrooms, a shower room, kitchenette and lounge/dining space complimented by the covered decking. The overall footprint including the decking is 57 square meters.



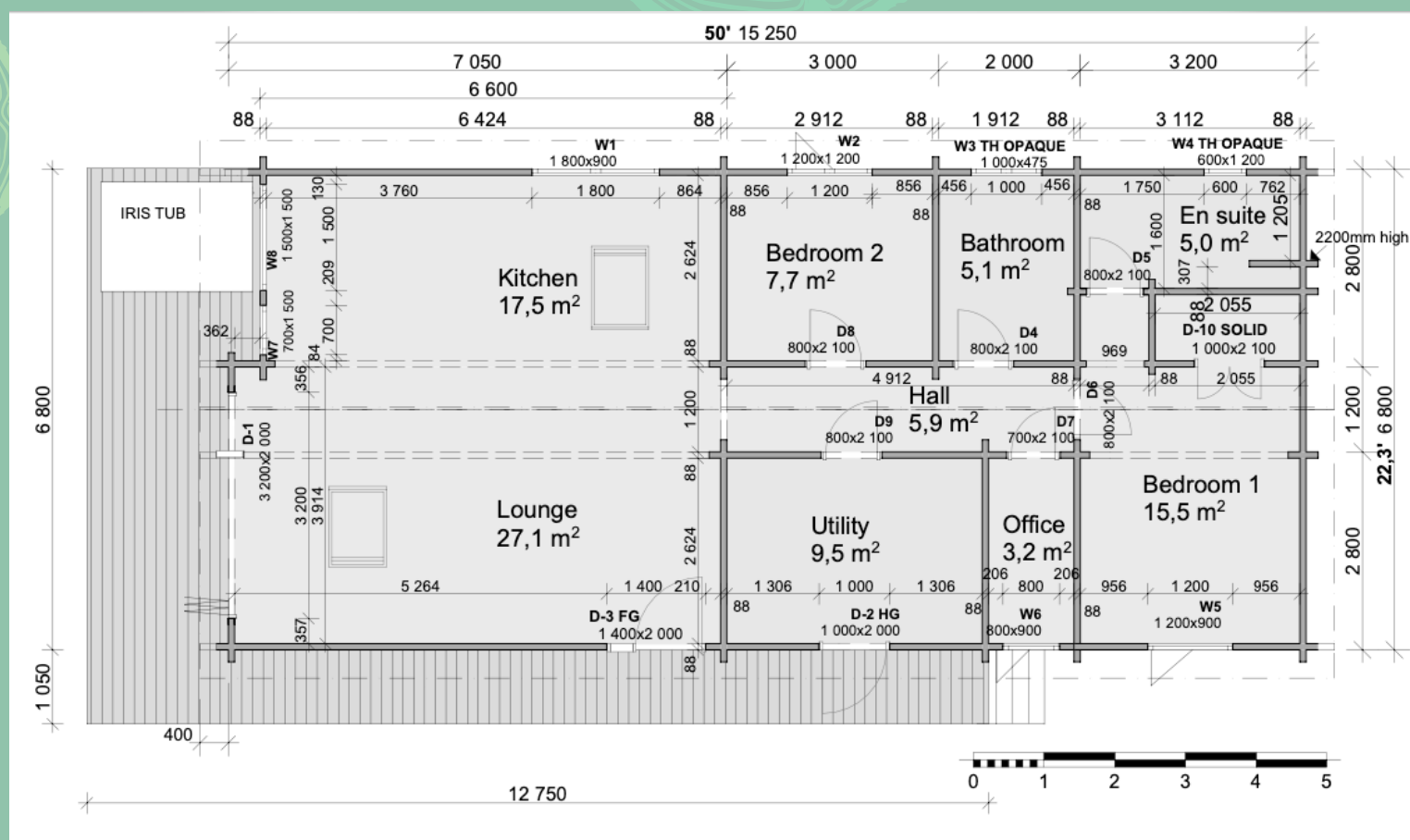
Norfolk

This two bedroom design offers a handy entrance/utility space, open plan living, kitchen & dining space complimented by a covered decking. Over the last 25 years this design has been one of the most popular.

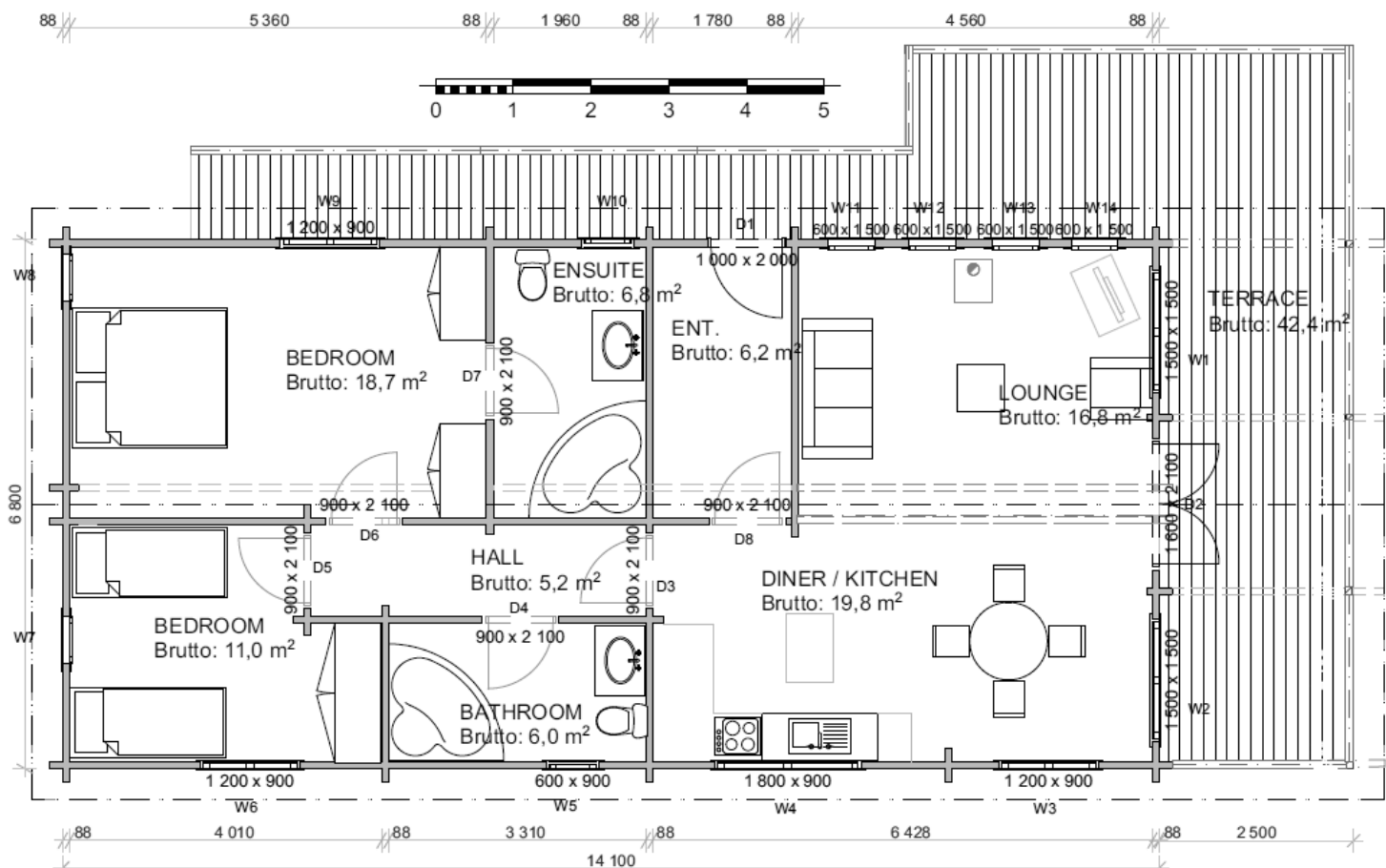


Hoby

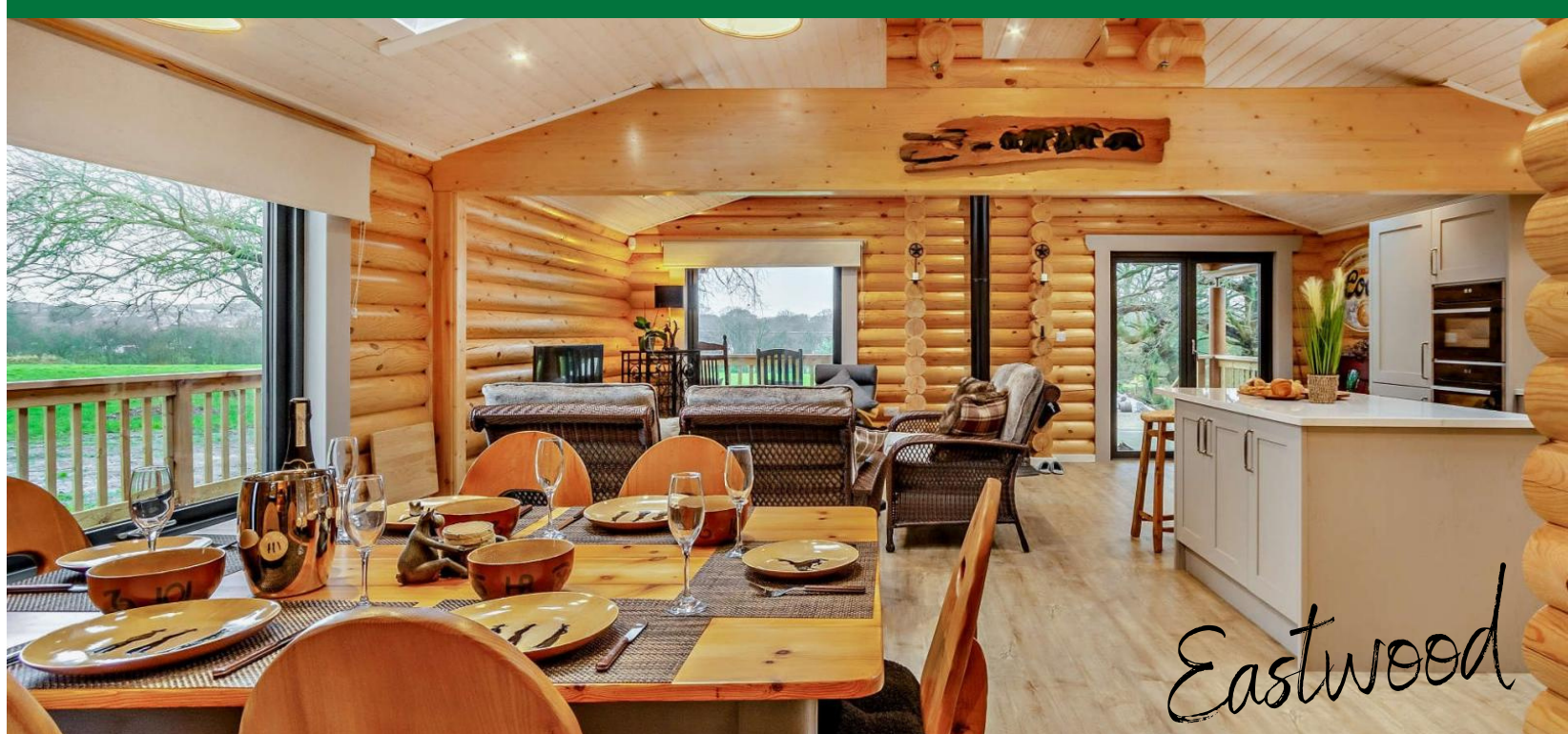
In this design, the master bedroom includes an ensuite shower room and comes with built-in wardrobes. Alongside the master bedroom, you'll find a second bedroom, a family bathroom, a dedicated office space, a spacious utility room, and an open-plan living, kitchen, and dining area.



This design was conceived for a family relocating to their elderly parents' property to provide care and support. The master bedroom includes an ensuite for added convenience and the open-plan living, kitchen, and dining area is beautifully enhanced by the addition of a covered deck. We also redesigned this slightly for the cabin pictured below.

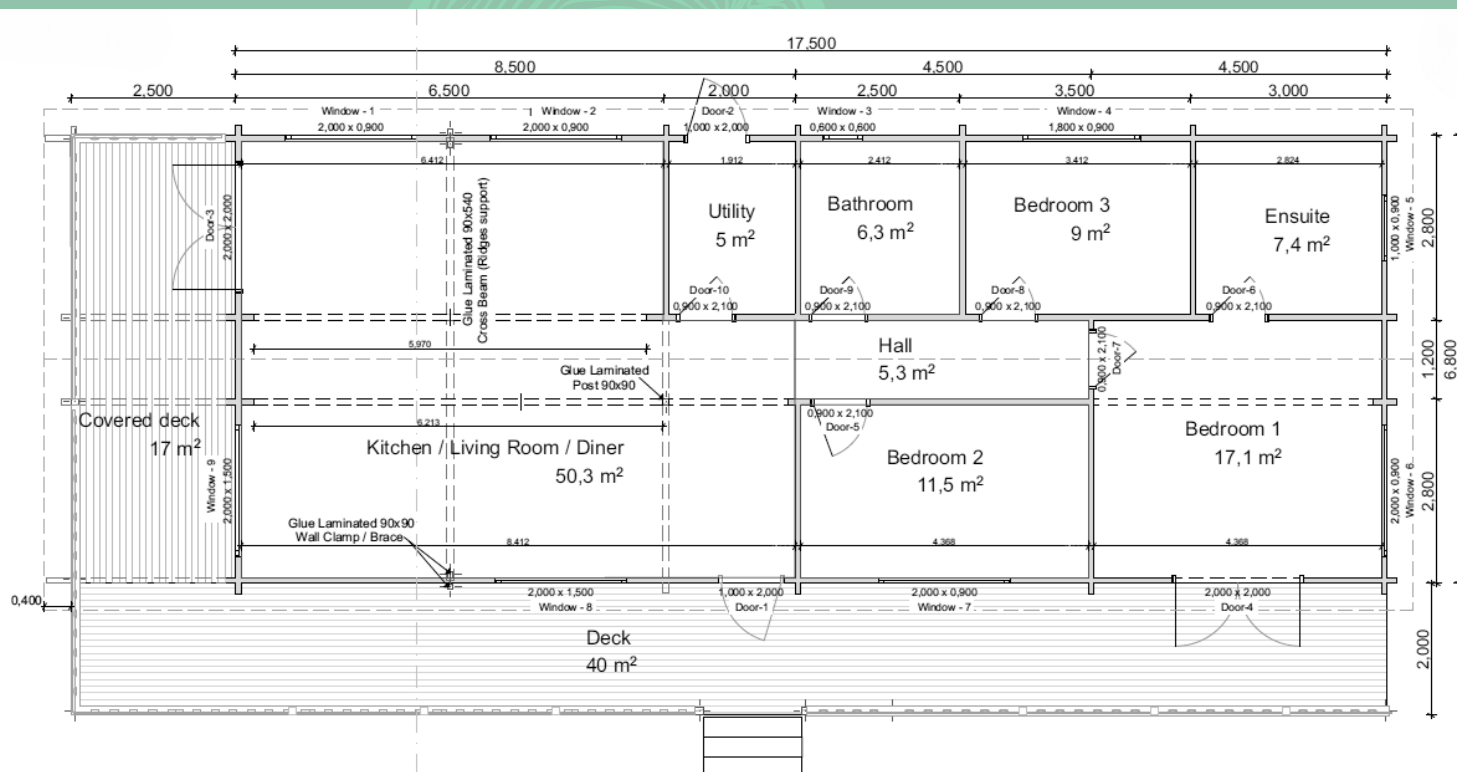






Eastwood

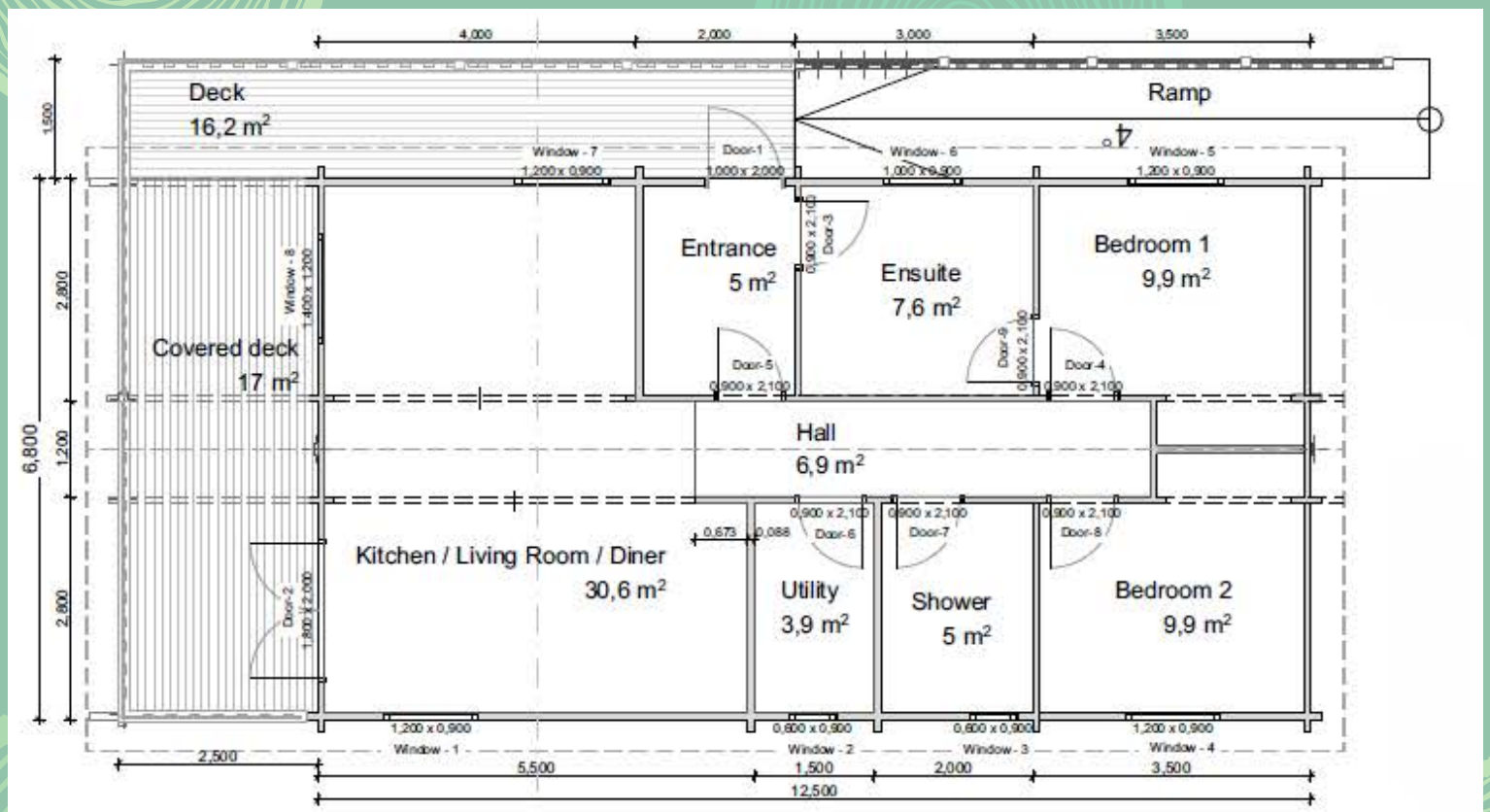
This charming 3-bedroom log cabin is a rustic retreat that seamlessly blends modern comfort with the timeless beauty of nature. This cabin was crafted with 190mm round logs but can equally be supplied in flat logs., the exterior exudes a warm and inviting ambiance. As you approach, you are greeted by a spacious covered decking area, offering a perfect spot to unwind and soak up the natural surroundings. Whether it's sipping morning coffee or stargazing at night, this space provides an ideal extension of the interior, making the most of the countryside views. Inside, the cabin boasts three cozy bedrooms, each designed for restful nights. The master bedroom features an ensuite bathroom for added privacy, while the family bathroom is located towards the centre of the lodge for convenience.



Barrington

This building was carefully designed to offer comfortable and functional accommodations to those employed in the agricultural sector.

One of the standout features of this design is the thoughtful consideration of the occupants' daily routines and requirements. The layout includes a generously proportioned entrance area that also doubles as a mudroom. This not only preserves the cleanliness and hygiene within the accommodation but also adds an element of comfort and practicality, making it an optimal solution for workers who need to transition seamlessly from the field to their living quarters.



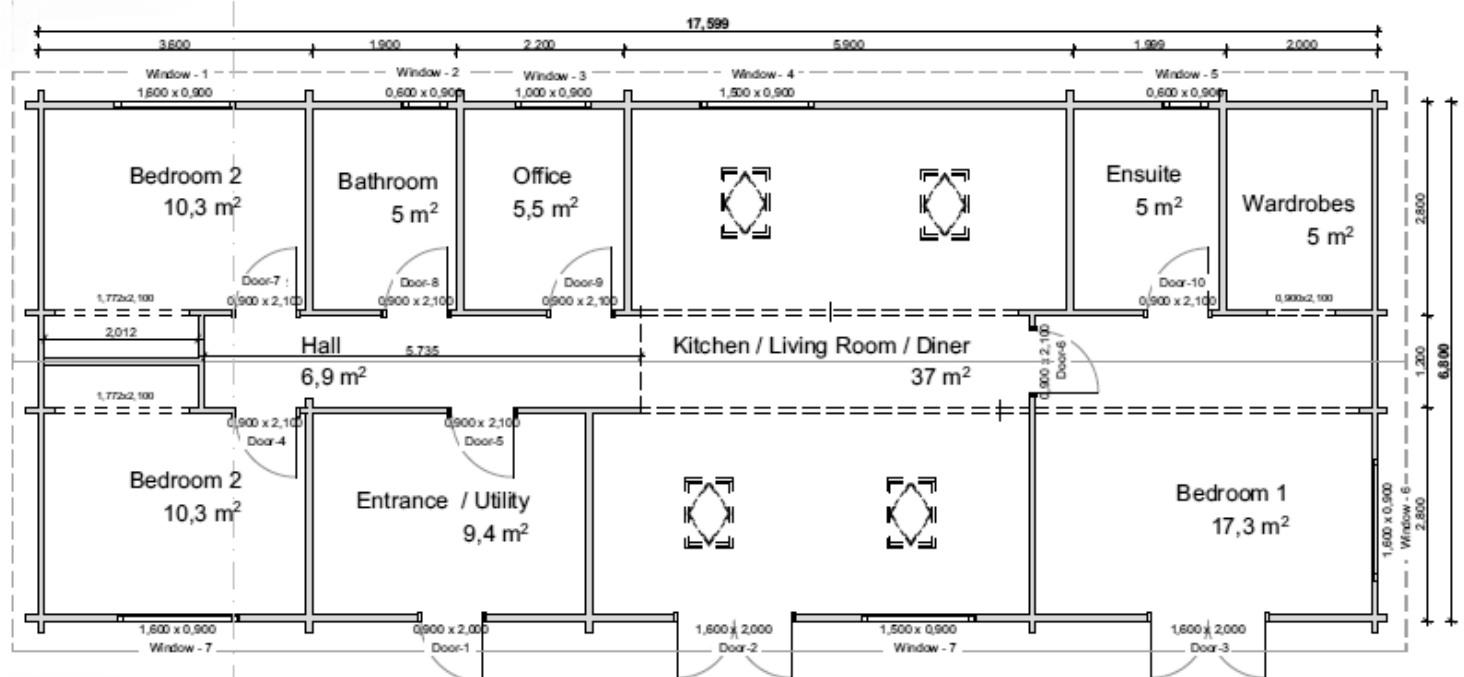
Worcester

With three bedrooms, this cabin is tailor-made for a family who run an equestrian business. The master bedroom boasts its own ensuite bathroom, providing the ultimate in convenience and privacy, a walk-in wardrobes offer ample storage space for tack, ensuring that every rider's equipment has its designated place.

The heart of the cabin is the open-plan living, kitchen, and dining area. This central space creates an inviting atmosphere for family gatherings. The kitchen is equipped with modern amenities making meal preparation a breeze. The dining area allows for enjoyable family meals and doubles as a great spot for conversations and relaxation.

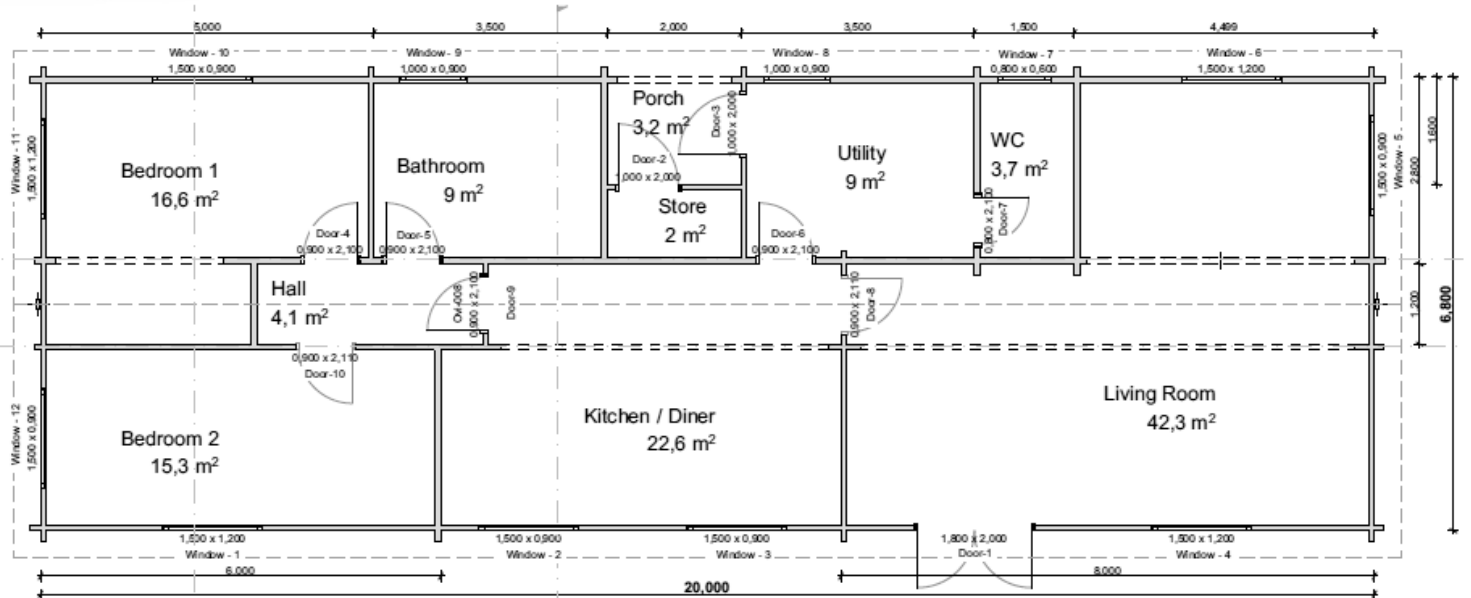
An office space within the cabin provides a dedicated area for managing the administrative side of the equestrian enterprise.

Additionally, a large utility and mudroom serves as the perfect transition space between the outdoors and the cabin. This room is equipped to handle the inevitable mess that comes with equestrian pursuits, with ample room for cleaning and storing riding gear, boots, and more.



Highlander

This very spacious two-bedroom layout features a separate kitchen-diner, a spacious lounge and a generous mudroom/utility room complete with a convenient WC. Additionally, there is a family bathroom for added functionality.

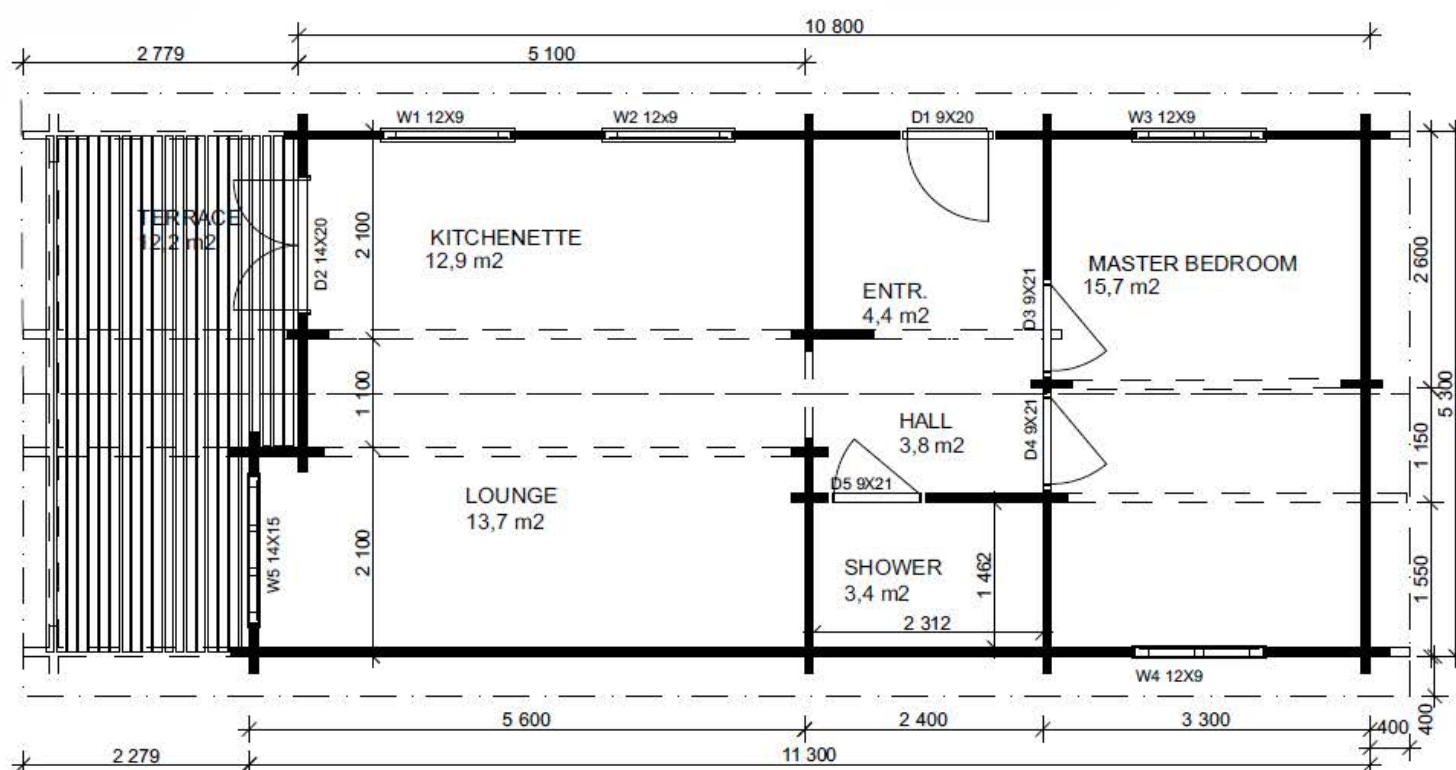






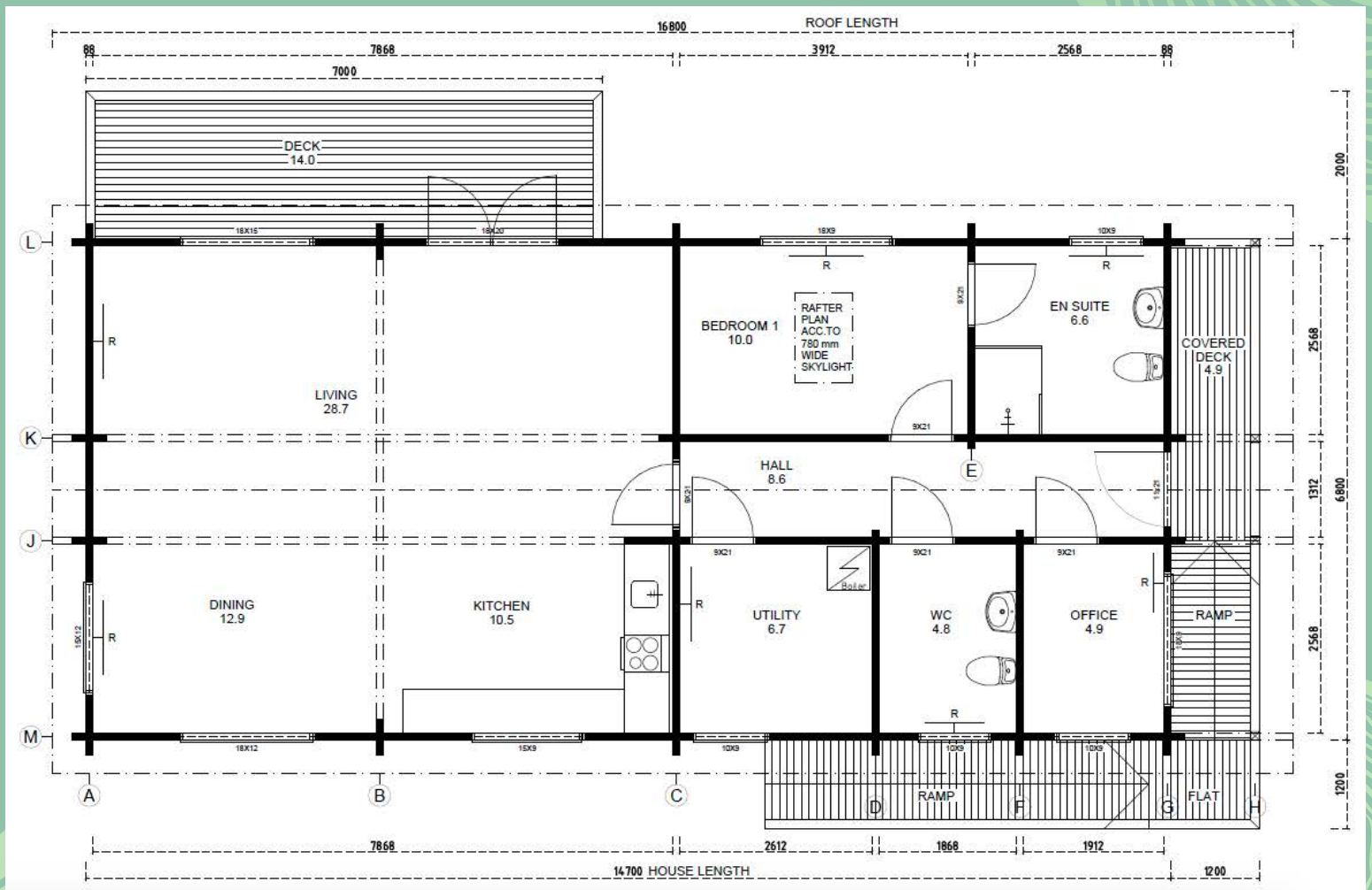
Walton

This charming single bedroom design boasts a delightful open-plan living, kitchen, and dining area, creating a welcoming and spacious atmosphere. It also features a well-appointed bathroom for added comfort and an entrance/utility area designed to meet your practical needs. This cozy dwelling offers everything you need for a comfortable and convenient lifestyle.

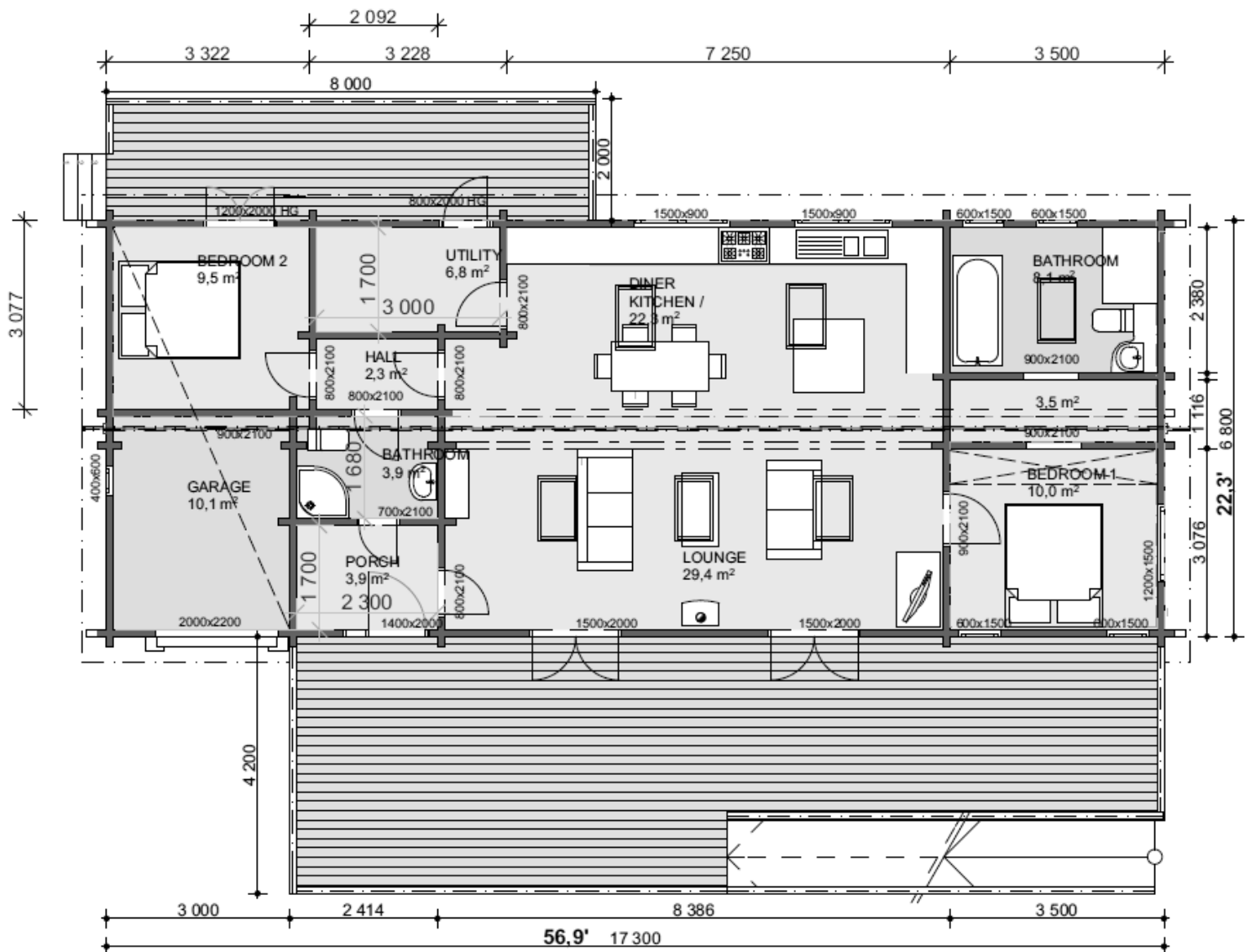


Saxelbye

This one-bedroom layout is the ideal choice for those who work from home featuring a spacious office, an ensuite shower room, a guest bathroom, a sizeable utility area and an open-plan living, kitchen, and dining space.

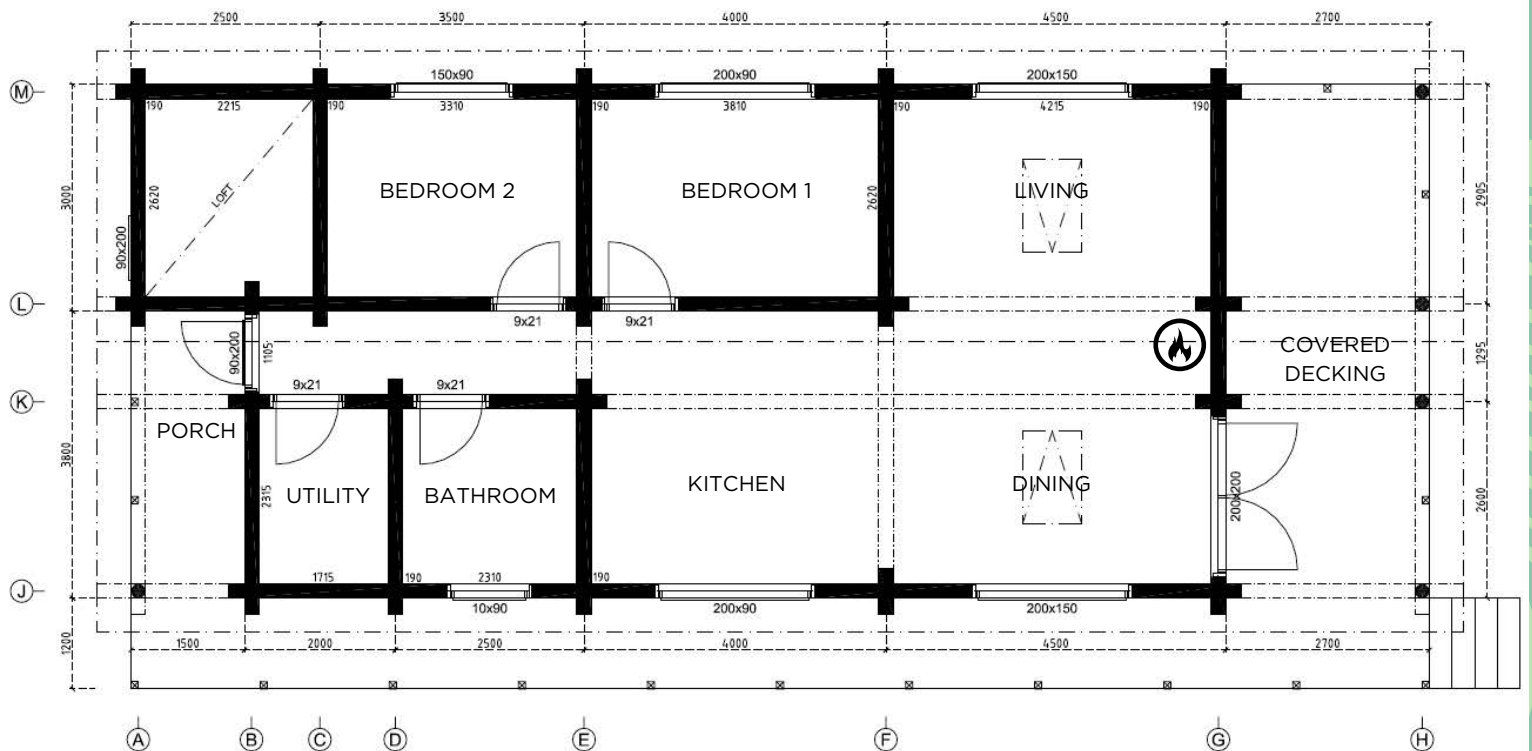


A photograph of a wooden cabin interior. A wooden staircase with a curved wooden railing is visible on the left. Below the staircase is a small wooden cabinet with two doors and two drawers. The walls are made of horizontal wooden planks. In the background, a window with a wooden frame is visible, showing a view of the outdoors.



Switzerland

The standout feature of this design is the L-shaped combination of the living, kitchen and dining areas harmoniously centred by the log burner. This layout is ideal for hosting as it seamlessly connects the dining area to a covered deck.







Planning

There are a range of planning permission options contingent upon the location and intended purpose of your cabin.

Our most in-demand structures typically measure between 14-20 meters in length and 6.8 meters in width, sited within the garden's curtilage for use as a granny annex, auxiliary to the main dwelling.

If the structure does not occupy more than half of the total plot area in combination with other buildings, it may be placed within your permitted development rights. However, we always recommend obtaining a certificate of lawfulness from your local council through a local planning advisor.

Caravan Act

You may be wondering about the connection between the Caravan Act and log cabins, due to there obvious differences. However section 29 of the Caravan Act specifies the parameters for defining a mobile (transportable) structure in the United Kingdom, which encompasses certain specifications. The key points are below:

- Maximum Length: 20 meters
- Maximum Width: 6.8 meters
- Maximum Overall height (internally, measured from the lowest point on the floor to the highest point on the ceiling): 3.05 meters
- Categorised as a mobile structure rather than a permanent building
- Suitable for human habitation
- Possessing the capacity to be relocated from one location to another, including within its designated site after assembly.

Finlog has legally established that our transportable buildings comply with British Standard BS3632 and the Caravan Act of 1968, providing peace of mind to our customers and planning departments throughout the UK.

What Happens Next?

The process usually takes around 16-18 weeks from the day you place your order to the day we hand over your keys, however this can vary depending on the weather.

- 1: Visit us at our site, Frisby Lakes in Melton Mowbray, to see if the cabins are right for you and discuss the many options.
 - 2: We design a bespoke building to meet your needs or you can choose a design from our extensive library.
 - 3: Apply for a certificate of lawfulness or planning permission if needed.
 - 4: We visit your site to determine the best type of foundation, evaluate the access and finalise the design.
 - 5: We provide a final quote and size for the groundwork.
 - 6: When you are ready, place your order with a 40% deposit and start the groundworks.
 - 7: Around 6-8 weeks after you place the order, your building will be delivered to you. The second 40% payment plus haulage is payable upon delivery day.
 - 8: Our crew will construct your cabin onsite, this will take around 6-10 weeks depending on the weather and the remaining payment is broken down as follows;
 - 10% on the start of construction
 - 5% when the building is water tight
 - 2.5% on completion
 - 2.5% 30 days after.
- Any additional works requested will be charged along the way.
- 9: Take your keys and enjoy your log cabin.



Commercial Projects

A log cabin as a commercial building offers a unique blend of practicality, cost-efficiency and aesthetic appeal. First and foremost the low running costs of log cabins are a significant advantage. The natural insulating properties of wood make them highly energy-efficient, reducing heating and cooling expenses. Additionally log cabins are incredibly durable and require minimal maintenance leading to long-term cost savings. Beyond the financial benefits, the rustic charm and natural beauty of log cabins create a welcoming and visually appealing atmosphere, making them an ideal choice for businesses aiming to leave a lasting impression. The timeless aesthetic of a log cabin exudes warmth and authenticity, adding a touch of character to any commercial space from cafes and boutiques to offices and wellness centres.

In a world where uniqueness and sustainability are increasingly valued, log cabins provide an enticing solution for businesses seeking to stand out, while keeping operational costs in check. Please note these buildings are not classed as transportable and planning permission is required as well as building regulation compliance.



Log Homes

Log homes are recognised for their exquisite appearance, although navigating building regulations and obtaining planning permission can present challenges. Despite this, the effort invested is justified by the final outcome. Due to UK building regulations, in some cases it is not feasible to construct conventional single skin log homes. However, we offer several hybrid log options that comply with these regulations. The optimal approach is to construct insulated log homes while retaining the log effect, through the utilisation of an interior cladding that matches the log profile used on the exterior, or to use Thermolog walls. The Laminated 198m+45 variant of Thermolog is particularly sought-after due to its impressive U-value of 0.16.





Contact Information

If you have any questions or would like to arrange a viewing please do not hesitate to email, call or contact us via social media.

Phone: 01664 434108

Email: info@finlog.co.uk

Visit us at: Frisby Lakes Lodge Park, Hoby Road Asfordby, Melton Mowbray, Leicestershire, LE14 3TL

Office Hours: 9am - 5pm Monday - Friday, Weekends by appointment only

Online Platforms: Scan the QR code with your smart phone camera for direct links to our websites and social media accounts



Warranty Information

1. Structural Integrity Warranty: We guarantee the structural integrity of your log cabin for a period of ten years from the date of purchase. This warranty covers any defects or damage that may occur due to manufacturing or structural issues.

2. External Treatment Requirement: To maintain and renew the warranty, it is crucial that you properly maintain the exterior of your log cabin. This includes periodic respraying or repainting with an approved paint or wood treatment. We recommend following our guidelines for the appropriate treatment products.

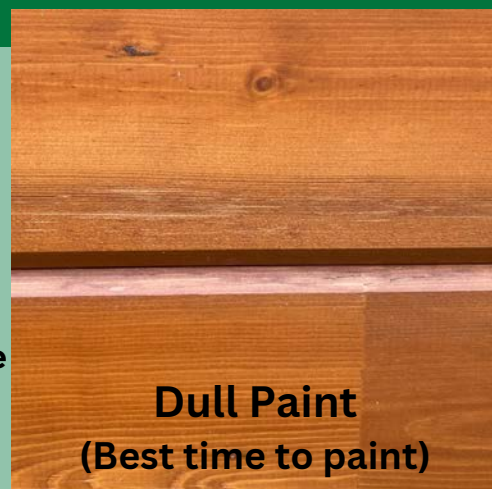
3. Photo Documentation: To ensure the longevity of your building, it is mandatory to send us before and after photos of your log cabin after each external treatment. This helps us update our records and confirms that the treatment has been applied correctly.

4. Use of Approved Treatment Products: It is important to use the same paint or wood treatment products that were recommended by us during the initial purchase. Deviating from these recommendations may void the warranty.

5. Warranty Void Due to Neglect: If your paint begins to flake and the log cabin is not re-treated with our approved treatment in a timely manner, your warranty will be void until the treatment is re-applied and approved by us.

Please keep in mind that this warranty does not cover damages caused by accidents, natural disasters, unauthorised modifications, or improper use. In the event of a warranty claim, please contact us.

We are committed to ensuring your log cabin remains a beautiful and durable addition to your property. By following these guidelines, you can enjoy the peace of mind that comes with our renewable structural warranty. We also have staff on hand to answer any questions or provide a quote for re-painting your building, as well as a handy log care video to assist you if you wish to undertake these works yourself.



Dull Paint
(Best time to paint)



Matt/Rough Logs



Flaking Paint
(Void Warranty)



Grey Logs
(Potential Structural Issues Void Warranty)



If you leave your logs too long, you can end up with serious structural issues such as these. The examples show the detrimental effects of not looking after your logs, this can lead to us having to replacing sections of the building to maintain its structural integrity but it is not always possible to do this. These images are from a repair we carried out on a building supplied by another company.



FAQ's

Q: How long will my building last?

A: As long as your building is maintained correctly it will last many, many generations and will keep renewing your structural warranty.

Q: Are log cabins easy to get planning for?

A: Depending on the location and use a lot of transportable buildings can be constructed under your permitted development rights however, we always advise our clients to use a local planning consultant, usually the hardest part is staying patient while waiting for the go ahead from the council.

Q: What makes Finlog's cabins stand out from competitors?

A: Finlog has been building log cabins to order for over 30 years, we only use the best slow grown Finish timer and pride ourselves in offering the highest quality log buildings. We are also the only log cabin supplier in the UK with a holiday park development featuring our buildings for customers to visit.

Q: Do you pay VAT?

A: Mobile/Transportable buildings are zero rated VAT. Commercial buildings and homes are subject to VAT.

Q: What if the access to our site isn't great?

A: We love a challenge and have never been beaten yet! We will evaluate the access during our site visit and make a plan for delivery day.

Q: What needs to be done before the building arrives?

A: You will need to have the foundation ready, built to the size we specify with 1m of hard standing around the base.

Q: What type of logs would you recommend?

A: All our logs are great for UK weather however 114mm laminated logs usually give the best value for money, obviously the bigger you go the better U value, better sound proofing and more traditionally aesthetic but 114mm laminated is a nice blend of traditional and modern styles.

Q: How long does it take from placing an order to getting the keys?

A: On average it takes around 8 weeks from order for the building to arrive at your site, then a further 8 weeks for construction, however this can depend on the complexity of the building, size and weather.

Q: Is there a service and maintenance plan?

A: There is not a subscription based service plan as the maintenance is quite straight forward, we are always happy to liaise with our customers and answer any questions. If necessary we can arrange a site visit however, in most cases emails and photos are sufficient to offer advice or provide a rough estimation for a respray.

Q: What's the price range?

A: The Mobile/Transportable buildings featured in this brochure range from £80,000 - £195,000 and the Commercial/Homes start from around £200,000 and depend on how much of the construction you wish for us to undertake.

Q: Are the buildings DDA compliant?

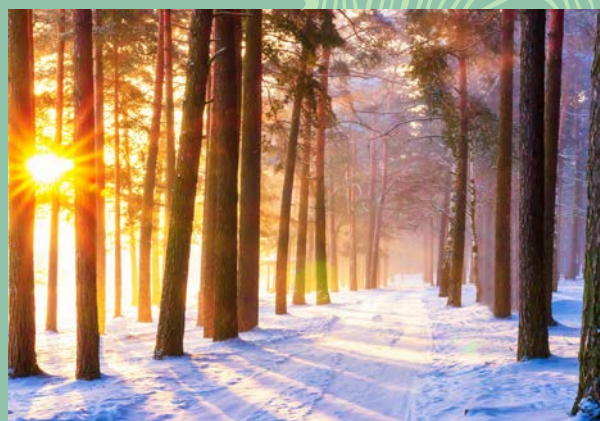
A: As everything is designed to order we can make sure your building is DDA compliant if you have any needs which should be accounted for, we will make sure we plan for them. We also recommend keeping the future in mind during the design process as it's more cost effective to future proof the building rather than revamp it, should access become an issue down the line.

Q: What included in the price?

A: A standard price includes the supply and build of the shell (Logs, Roof, Windows, Doors and Construction) however, we also offer turn key and bespoke packages that you can tailor based on how much you want us to do. The most popular option is usually supply, construction, UFH, plumbing, electrics and finished flooring.

Q: Where are our logs sourced?

A: All our logs are harvested from managed forests in Northern Finland like these ones:





“Like the original build some 5/6 years ago your latest weatherproofing of my cabin has been carried out with both enthusiasm and attention to detail. It is so great to find such a reliable company that can be totally trusted and that gives really good value for money. Thanks again and see you next time.”

*Testimonial by **AJ. Hampshire.***

“I would like to thank this team for their excellent dedication to the job of building our dream home. Everything we hope for has been realised and more. Right from your introduction to your designer, through the building warrant and onto the finishing off, we could not be more pleased.”

*Testimonial by **Mr. Lister, Scotland***

“I contacted Finlog from their website late one night after having been let down at the last moment by another company. I was very impressed to find an answering email on my computer by 9am the next morning. They proved to be extremely helpful both initially and in doing their best to meet my urgent build. They were extremely friendly and professional in establishing the build from start to finish. They also came out to check the building a year or so later for me. Now four years later the log cabin is as good as the first day - warm, dry and comfortable. It has been a wonderful home for my mothers last few years and now graces our garden as extra guest accommodation.”

*Testimonial by **Mrs. Gorvin***

